

# 733 SUMMER STREET



## OFFICE SPACE AVAILABLE

Partial 2<sup>nd</sup> Floor Suite 200: 6,100 SF – Occupancy 11/1/18 - Sublease

Partial 3<sup>rd</sup> Floor, Suite 303: 750 SF – Occupancy Immediate

Partial 5<sup>th</sup> Floor, Suite 501: 1,150 SF – Occupancy Tbd

**PARKING:** 3 SPACES PER 1,000SF.

**TERM:** LONG & SHORT TERM AVAILABLE.

**BASE RENT:** \$22 PSF + ELECTRIC.

**ALL SUITES TURNKEY OR PRE BUILT NEW!**

**STEPS FROM PRIME DOWNTOWN STAMFORD.**

Exclusive Agent

PLAZA REALTY & MANAGEMENT CORPORATION

Gene Rubino Phone: 203-653-6541 Email: [grubino7@aol.com](mailto:grubino7@aol.com)

Michael Lombardo Phone: 203-653-6535 Email: [mgl@plazarealtymgmt.com](mailto:mgl@plazarealtymgmt.com)

[www.plazarealtymgmt.com](http://www.plazarealtymgmt.com)

# SUITE 201 FLOORPLAN

**2ND FLOOR**

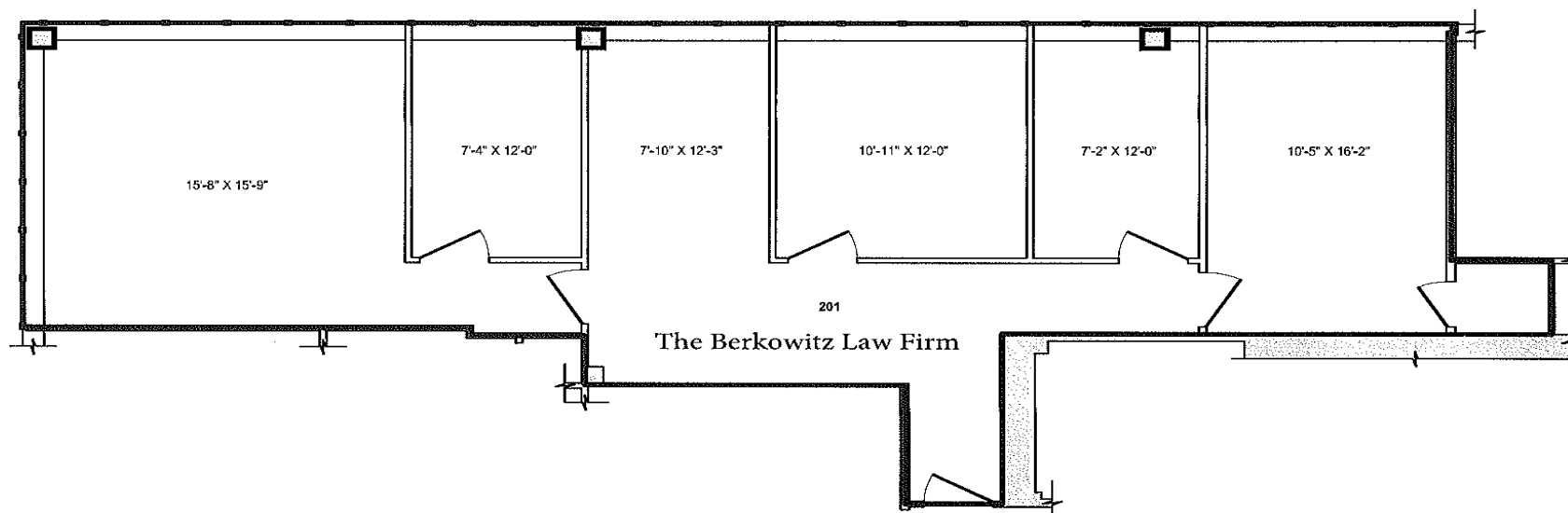
SUITE 201 The Berkowitz Law Firm

**733 SUMMER STREET, STAMFORD, CT**

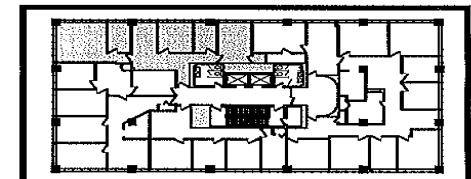
PLAN OF EXISTING CONDITIONS - 2ND FLOOR

SCALE: 1/8" = 1'-0"

Dated August 18, 2016



FLOOR KEY



# SUITE 202 FLOORPLAN

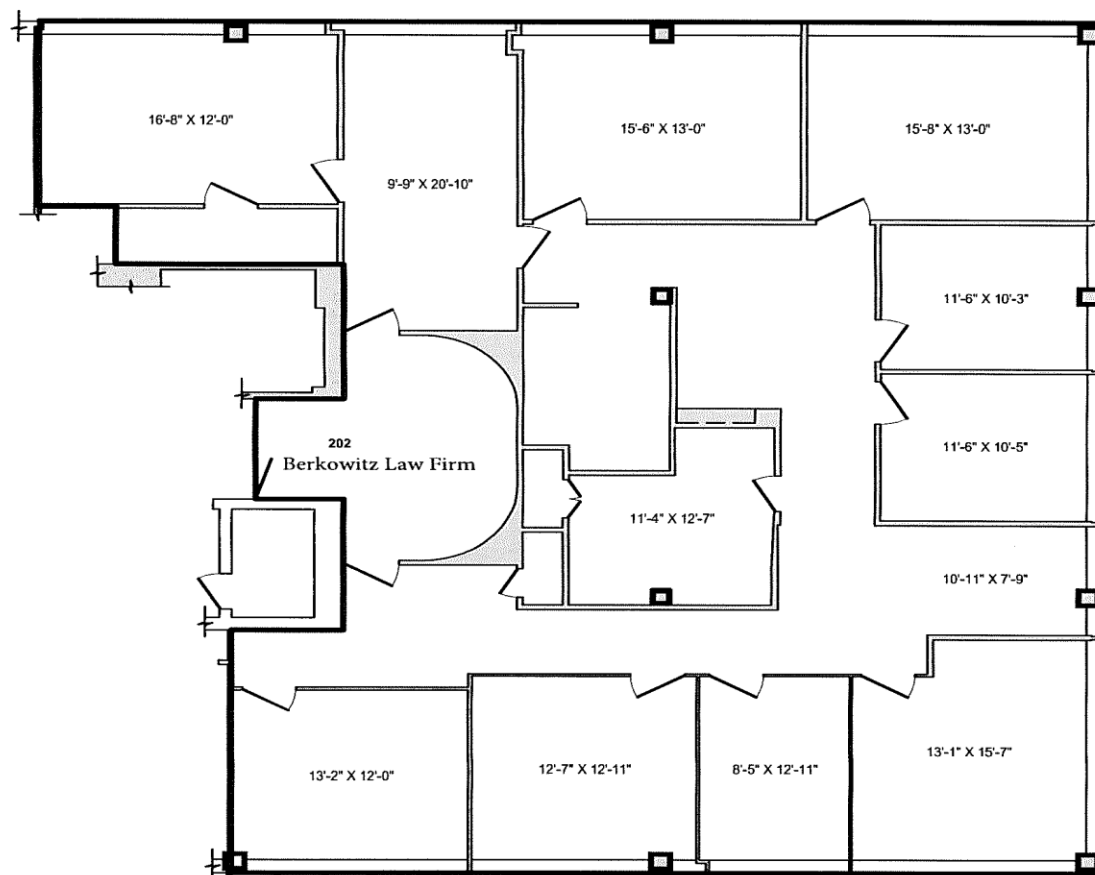
**2ND FLOOR** SUITE 202 The Berkowitz Law Firm

**733 SUMMER STREET, STAMFORD, CT**

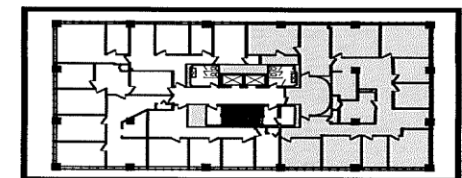
PLAN OF EXISTING CONDITIONS - 2ND FLOOR

SCALE: 3/32"=1'-0"

Dated August 18, 2016



FLOOR KEY



# SUITE 303 FLOORPLAN

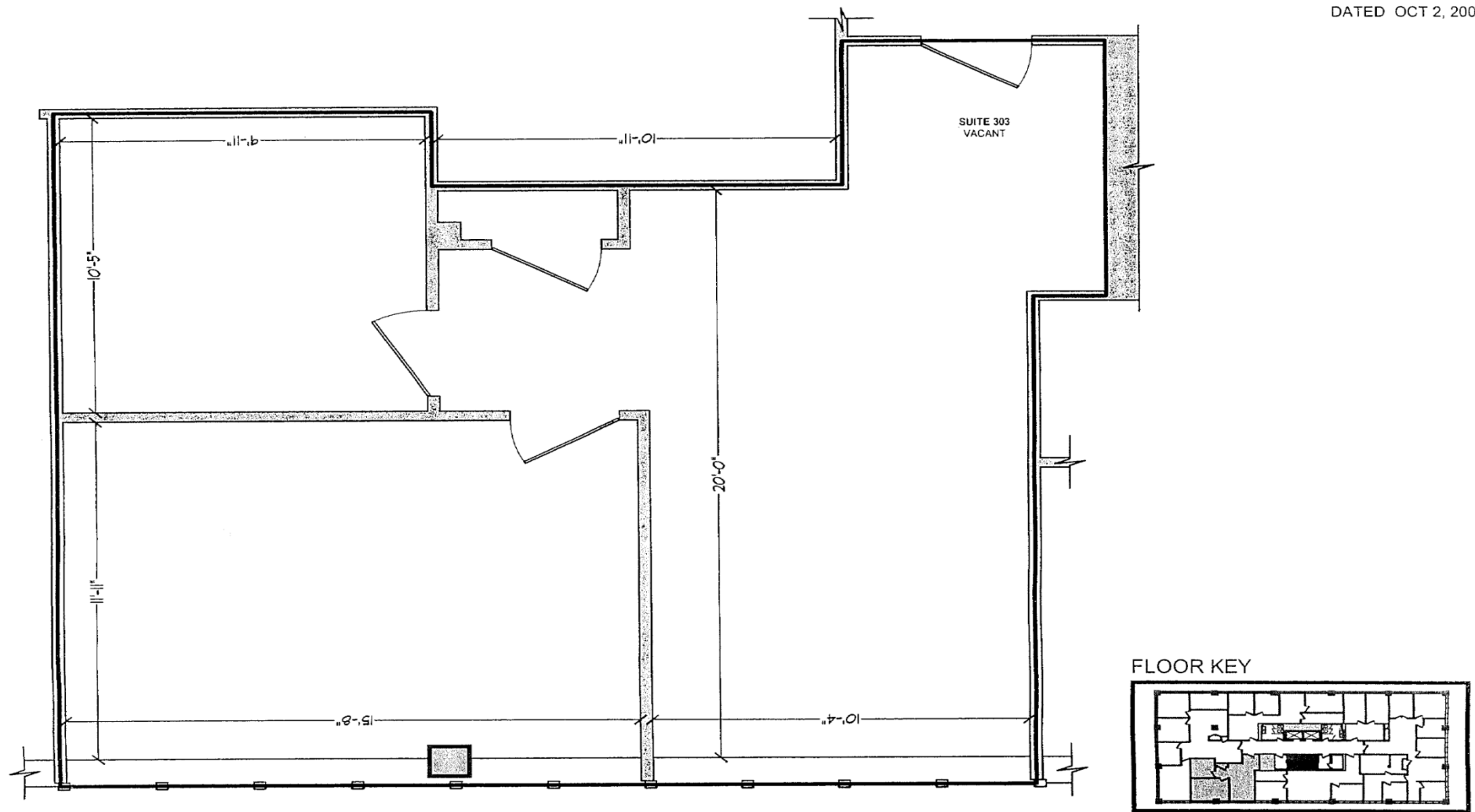
3RD FLOOR SUITE 303 VACANT

733 SUMMER STREET, STAMFORD, CT

PLAN OF EXISTING CONDITIONS - 3RD FLOOR

SCALE: 1/4" = 1'-0"

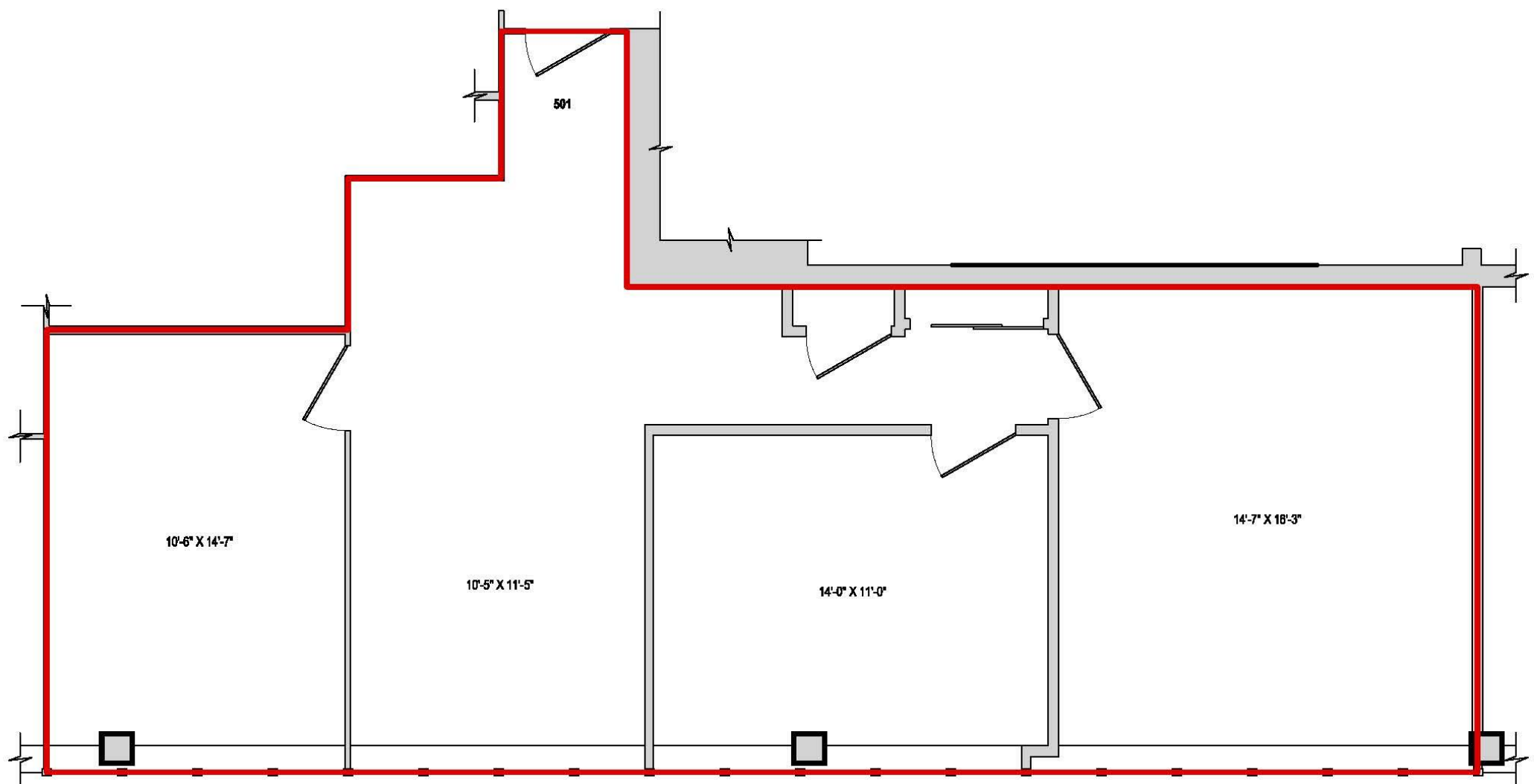
DATED OCT 2, 2009



# SUITE 501 FLOORPLAN

**5TH FLOOR** SUITE 501

**733 SUMMER STREET, STAMFORD, CT**  
PLAN OF EXISTING CONDITIONS - 5TH FLOOR  
SCALE: N.T.S.



**FLOOR KEY**

